

New for  
2012

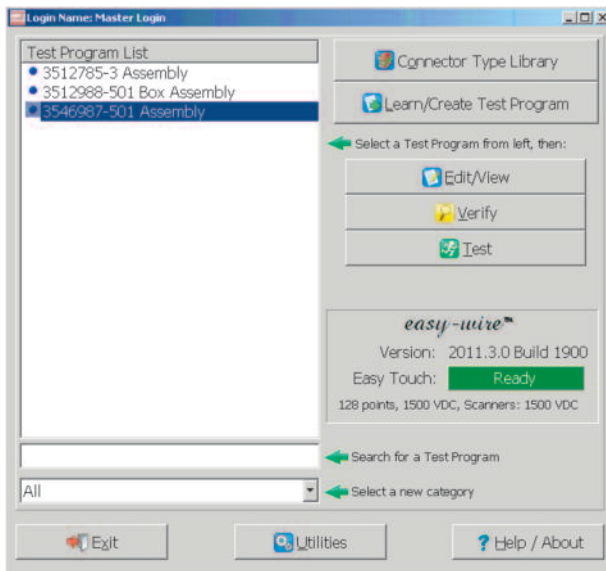
*easy-wire*<sup>TM</sup>



## *easy-wire*<sup>TM</sup> Software for 1100R+ & 1100H+ Testers

The Easy-Wire software, previously available only for the CH2, CR, and Easy Touch systems, is now available for the 1100R+ and 1100H+ testers. The new software converts an 1100 series tester from a standalone, bench-top unit into a PC-controlled test system providing many of the benefits of the Easy-Wire software.

### Easy-Wire Main Menu



### Now with the Easy-Wire software:

- Edit test programs using the robust Easy-Wire graphic user interface.
- Print reports using any Windows compatible printer.
- Easily customize reports to include desired fields, including a company logo.
- Improve quality and performance by collecting test data for every device tested.
- Save measured values for all resistance tests with the optional data collection feature.
- Easily associate product serial numbers or lot numbers with test results to improve traceability.
- Readily add password protected levels of access for improved security.
- Retrieve archived test results using built-in search tools.
- Print test reports from archived data.
- Reduce paperwork by automatically opening a specified document or video in its native application each time a test program is opened to start a test session.
- Network test stations using the optional Cirris Server software to improve test program revision control and to collect test results in a single location.

Toll-free 1-800-441-9910  
info@cirris.com • www.cirris.com

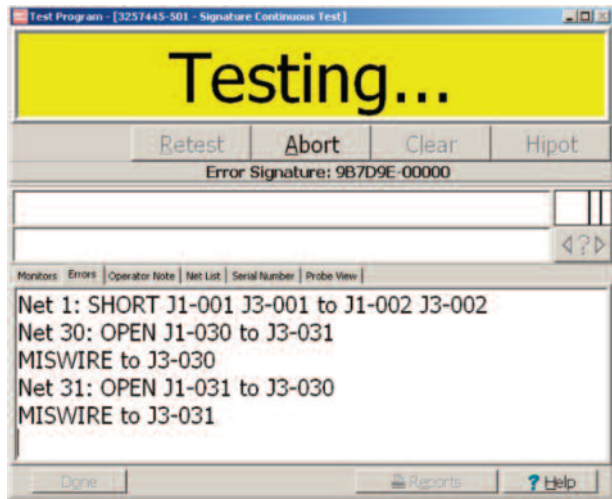
**CIRRIS**<sup>®</sup>

## Implementation:

The Easy-Wire software can be used with any 1100 tester with the “PC Control” optional feature enabled, regardless of age. The software can be installed under the Windows XP or Windows 7 operating systems. Communication with the attached tester is automatically established when the software is opened.

Newer testers, those shipped after April, 2012, use a USB connection between the PC and the tester. Older testers use a one-to-one serial cable for connection to the PC. A USB to Serial converter can be used with older testers if a serial port is not available on the PC.

## Easy-Wire Test Window



## Sample Easy-Wire Test Report

Test Report		CIRRIS						
<b>Test Results</b>								
<b>Passed</b>		Test Date: 1/30/2012 Test Time: 9:26:04 AM Operator: Master Login Station ID: 1175392757 Total Pages: _TOTALPAGES_	Run Number: 1 Cable Number: 1 Retry Count: 0 Details Count: 0					
<b>Test Parameters</b>								
Wire Resistance: 5.0 Ohm		Shorts Test Resistance: 100 kOhm						
<b>HV Test Parameters</b>								
Wait For Button: Off High Speed Mode: Off Halt on First Error: Off		IR Voltage: 250 V IR Resistance: 100 MOhm	DW Voltage: 250 V					
<b>Nets Hipot Status</b>								
#	Group	Name	Test Method	Measured IR				
1	1	Net1	Standard	>2.50 GOhm				
2	2	Net2	Standard	>2.50 GOhm				
3	3	Net3	Standard	>2.50 GOhm				
4	4	Net4	Standard	>2.50 GOhm				
5	5	Net5	Standard	>2.50 GOhm				
6	6	Net6	Standard	>2.50 GOhm				
7	7	Net7	Standard	>2.50 GOhm				
8	8	Net8	Standard	>2.50 GOhm				
<b>Error Details</b>								
#	Type	Con1	Pin1	Con2	Pin2	Measured	Expected	Instruction Detail
<b>Measured Values</b>								
#	Type	Con1	Pin1	Con2	Pin2	Measured	Expected	Measured Detail
1	WIRE	J1	001	J3	001	0.1 Ohm	5.0 Ohm	Measured 0.1 Ohm
2	WIRE	J1	002	J3	002	0.1 Ohm	5.0 Ohm	Measured 0.1 Ohm
3	WIRE	J1	003	J3	003	0.1 Ohm	5.0 Ohm	Measured 0.1 Ohm
4	WIRE	J1	004	J3	004	0.1 Ohm	5.0 Ohm	Measured 0.1 Ohm
5	WIRE	J1	005	J3	005	0.1 Ohm	5.0 Ohm	Measured 0.1 Ohm
6	WIRE	J1	006	J3	006	0.1 Ohm	5.0 Ohm	Measured 0.1 Ohm
7	WIRE	J1	007	J3	007	0.1 Ohm	5.0 Ohm	Measured 0.1 Ohm

## System Requirements

PC with 1.6 GHz min. processor speed, Windows XP or Windows 7 OS (Professional editions recommended), 10 GB hard drive space, 2 GB RAM, 128 MB min. video memory, 1024 x 768 min display resolution, serial port or USB 2.0 or 3.0 port.

Cirris 1100R+ or 1100H+ tester with PC Control feature enabled.

One-to-one serial cable (supplied with tester) or USB cable depending on hardware version of tester. Keyspan USA-19HS USB to serial converter if required.

Cirris Easy-Wire software for 1100 series testers.



Email [info@cirris.com](mailto:info@cirris.com) or Call Toll-free 800-441-9910 for more information or to arrange a demo of the software.

**CIRRIS**  
Cable/Harness Testing Made Easy™