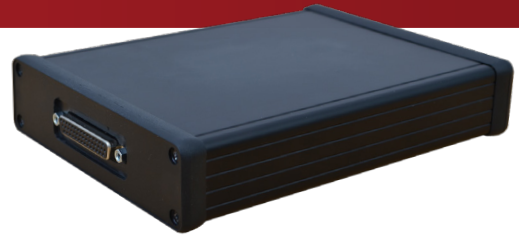


# Digital IO Module

While most Cirris testers have a built-in Digital IO port, the number of inputs and outputs are not sufficient for some situations. That's why we developed the Digital IO module. It provides more capability with 28 outputs, 20 inputs, voltage options, and more current.



## Product Features

- **Automated Testing Process** – Digital IO lets you set up automated actions to make the test process safer and more efficient.
- **Increase Safety** – Use Digital IO to add extra safety features to your process such as status lights and audio output.
- **More Inputs/Outputs** – The Digital IO module has more inputs and outputs than the built in version.
- **Twenty Dual Pins** – Twenty pins can be used as either an input or output giving you even more Digital IO options.
- **Voltage Options** – Voltage ranging from 3.3 volts to 24 volts expands your tester's capabilities.
- **Program using Lua** – Use scripting to customize test programs.
- **Setup Options Available** – If you are unfamiliar with Lua programming, Cirris can help create the scripts needed for your digital IO needs.
- **Designed for I100 and Easy Touch testers**
- **Dimensions** – 6.3" x 4.9" x 1.2"

	Digital IO Module	vs	Built-in Digital IO (Easy Touch)
<b>Interface Connector</b>	44-pin D-Sub		15-pin D-Sub
<b>Inputs</b>	20 dual pins		4
<b>Outputs</b>	20 dual pins 8 dedicated (Sink 500 mA total)		6 (Sink 500 mA total)
<b>Voltage Rails</b>	3.3 VDC, 5 VDC, 12 VDC, 24 VDC (500 mA max)		5 VDC, 12 VDC (100 mA max)

